

ENVIRONMENTAL MONITOR  
**COD-203**

## Continuous Monitoring for Work Place Chemicals.

Reliable indoor chemical monitoring even  
at low concentrations for a safe and  
secure work environment.



Laboratories

Clean Rooms

Indoor  
Work Spaces

etc...

**For daily work place monitoring**

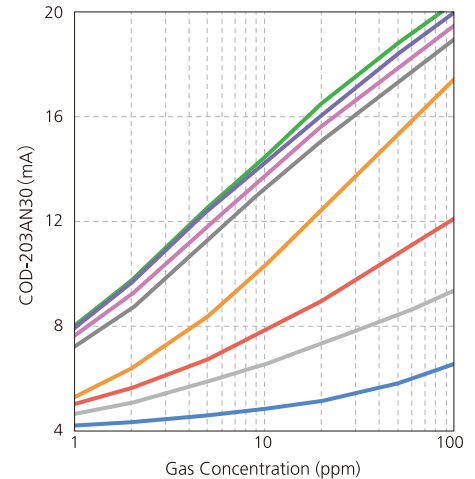
Actual Size

**Features**

- High-Sensitivity Semiconductor Sensor**  
 Our unique high-sensitivity sensor can detect chemical substances in the environment even at low concentrations.
- Capable of Detecting a Wide-Range of Substances**  
 The ability to detect a wide-variety of substances, in addition to VOC, allows for our monitor to be placed in a variety of environments.  
\*Please contact us for a complete list of detectable substances
- Compact and Light-Weight**  
 The elimination of a monitor and alarm functionality has allowed for a more compact and light-weight design.  
 Easily able to be mounted in desired monitoring locations using mounting magnets or brackets.
- Low-Cost Environmental Monitoring**  
 Sensor life-span of 2 years. The entire unit can be replaced, eliminating the need for on-site calibration.

**Examples of the Sensitivity Characteristics of Commonly Detected Substances**

- Acetone
- Ethanol
- IPA
- Ethyl Acetate
- Acetic Acid
- Xylene
- Toluene
- Benzene



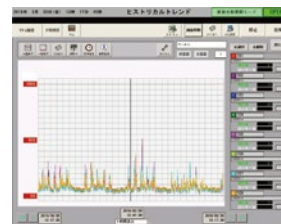
**Specifications**

Model	COD-203A			COD-203B
Detection Principle	Hot-wire semiconductor			
Detection Method	Diffusion			
Calibration Gas	Ethanol			Toluene
Full Scale Concentration	200ppm	100ppm	20ppm	5ppm
Recommended Installation Locations	General work areas			Clean rooms
Operating Temperature and Humidity Range	5°C to 35°C, 30%RH to 85%RH (with no condensation) *Assuming constant temperature and humidity (no fluctuation)			
External Output	Analog 4-20mA, trouble alarm: 0.1mA or less *Uninsulated, load resistance of 300Ω or less including wiring resistance			
Explosion Proofing	None			
Power	DC24V±6V			
Power Consumption	~2W			
Dimensions	W50 x H110 x D27mm (excluding protruding parts)			
Weight	~0.2kg			
Compatible Cables [Connection Methods]	~4-core shielded cable [4P plug type connector AWG-16 (approx. 1.25mm <sup>2</sup> ) to AWG-28 (approx. 0.08mm <sup>2</sup> )]			
Mounting Methods	Wall mount type (magnet or mounting bracket)			

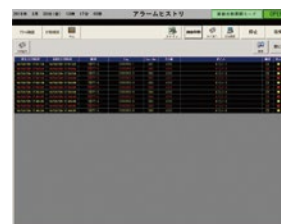
**Monitoring Output Examples**



COD-203 Fixed-point monitoring based on installation drawings



Real time monitoring trend graph



Alarm history display

**NEW COSMOS ELECTRIC CO., LTD.**

**Offices**

**Head Office (Osaka, Japan)**

2-5-4 Mitsuyanaka, Yodogawa-ku, Osaka, Japan 5320036  
 Phone: +81-6-6885-8484  
 E-mail: e-info@new-cosmos.co.jp

**Thailand Office**

4345 Bhiraj Tower at BIIEC, 23rd Floor, Sukhumvit Rd.,  
 South Bangna, Bangna, Bangkok 10260 Thailand  
 Phone: +66-2-017-5175  
 E-mail: info.cosmosthailand@new-cosmos.co.th

**Paris Office**

128 Rue Du Faubourg Saint-Honore, 75008 Paris, France  
 Phone: +33 6-62-93-51-53  
 E-mail: info@new-cosmos.fr

**Group Companies**

**NEW COSMOS ELECTRIC (SHANGHAI) CO., LTD.**

4th Plant No.385, Dongxing Road, Songjiang Industrial Zone,  
 Shanghai, China 201613  
 Phone: +86-21-6774-3138  
 E-mail: info@new-cosmos.com.cn

**NEW COSMOS ELECTRIC KOREA CO., LTD.**

3F,4F BMY Tower, 16, Teheran-ro 27-gil, Gangnam-gu, Seoul, Korea  
 Phone: +82-2-555-3102  
 E-mail: info@new-cosmos.co.kr

**TAIWAN NEW COSMOS ELECTRIC CO.,LTD**

10F.-3, No. 93, Shuiyuan St., East Dist., Hsinchu City 300042, Taiwan  
 Phone: +886-3-574-4593  
 E-mail: cosmost1@ms75.hinet.net

**New Cosmos USA, Inc.**

650 Warrenville Road, Suite 101, Lisle, IL 60532, USA  
 Phone: +1-847-749-3064  
 E-mail: support@newcosmosusa.com

**New Cosmos-BIE (Netherlands)**

Maxwellstraat 7, NL-1704 SG, Heerhugowaard,  
 the Netherlands  
 Phone: +31-72-576-5630  
 E-mail: sales@newcosmos-europe.com



**SAFETY WARNING**

Carefully read the instruction manual prior to use.  
 Select and use the device designed to detect the required type of gas. Use of a wrong sensor type may cause an accident.